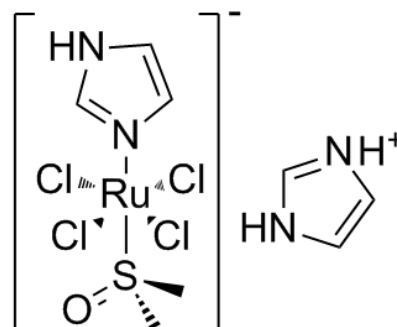


**Product Name** : NAMI-A  
**Cat. No.** : PC-45629  
**CAS No.** : 201653-76-1  
**Molecular Formula** : C<sub>5</sub>H<sub>10</sub>Cl<sub>4</sub>N<sub>2</sub>ORuS . C<sub>3</sub>H<sub>4</sub>N<sub>2</sub> . H  
**Molecular Weight** : 458.18  
**Target** : Matrix Metalloproteinase (MMP)  
**Solubility** : H<sub>2</sub>O: 8.28 mg/mL



## Biological Activity

NAMI-A is a ruthenium anticancer agent that has a selective effect on lung metastases of solid metastasizing tumors, inhibits the matrix metallo-proteinases **MMP-2** and **MMP-9** at micromolar concentrations.

NAMI-A significantly affects tumor cells with metastatic ability.

NAMI-A decreases the α5β1 integrin expression, and reduces FAK auto-phosphorylation on Tyr397 in HCT-116 colorectal cancer cells.

## References

Pelillo C, et al. J Inorg Biochem. 2016 Jul;160:225-35.

Sava G, et al. Clin Cancer Res. 2003 May;9(5):1898-905.

Frausin F, et al. J Pharmacol Exp Ther. 2005 Apr;313(1):227-33.

**Caution: Product has not been fully validated for medical applications. Lab Use Only!**

E-mail: tech@probechem.com